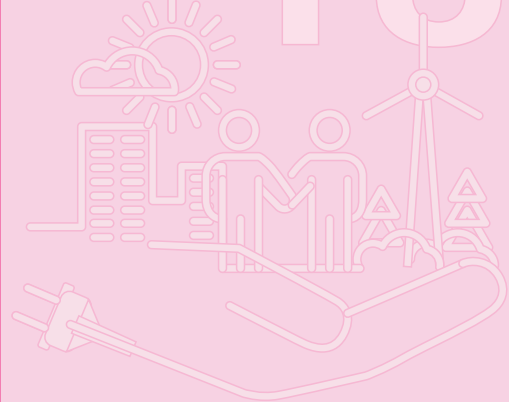
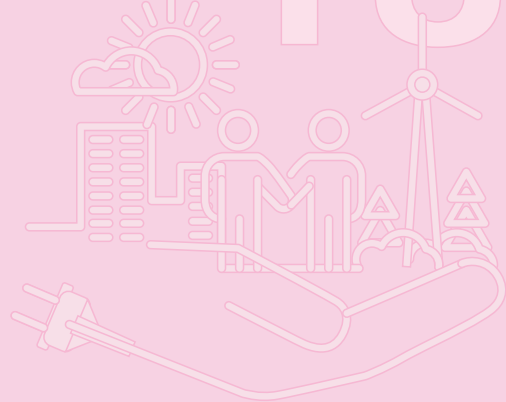


RENOVEREN
MET
JUSTICE



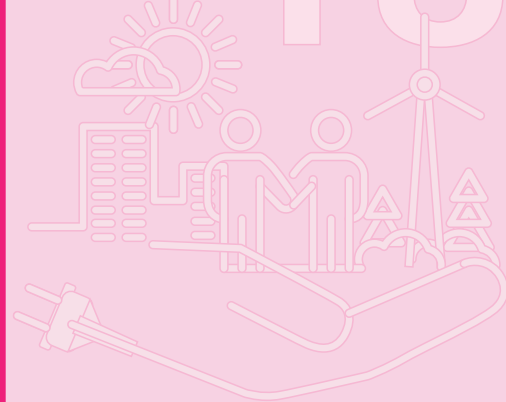
Liveability criteria card

RENOVEREN
MET
JUSTICE



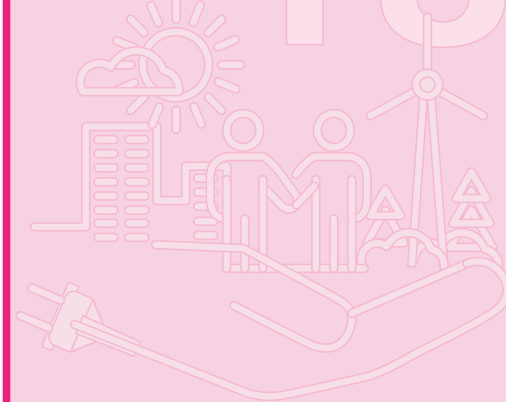
Liveability criteria card

RENOVEREN
MET
JUSTICE



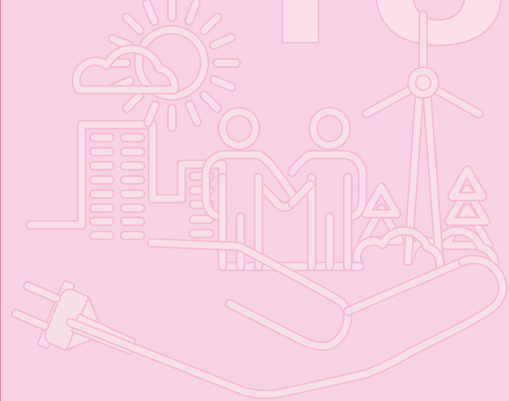
Liveability criteria card

RENOVEREN
MET
JUSTICE



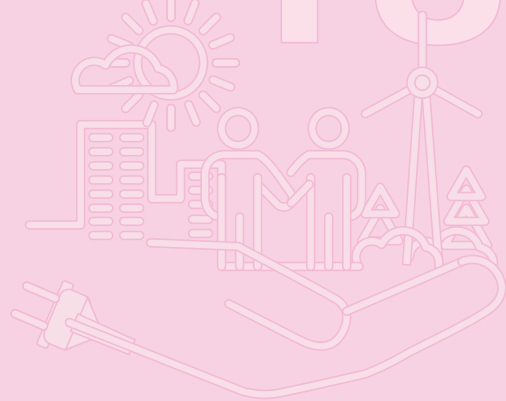
Liveability criteria card

RENOVEREN
MET
JUSTICE



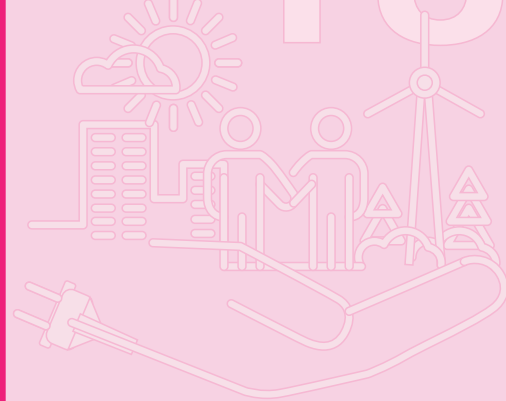
Liveability criteria card

RENOVEREN
MET
JUSTICE



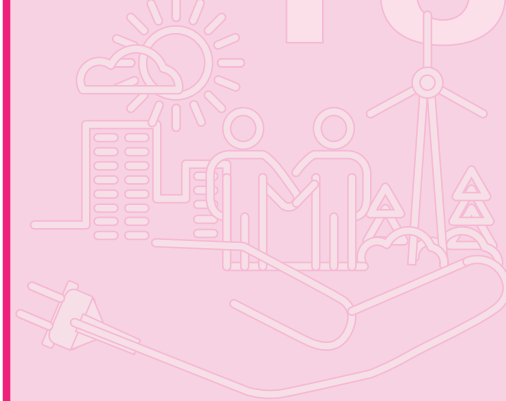
Liveability criteria card

RENOVEREN
MET
JUSTICE



Liveability criteria card

RENOVEREN
MET
JUSTICE



Liveability criteria card

Sociability

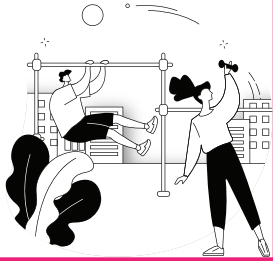
The potential of a renovation to support positive relationships and daily interactions among residents and neighbors.

Benefits:

- Community building
- Neighbors mutual help
- Safer living environment

Challenges:

- Noise and maintenance increase
- Not used or valued the same by everyone.



Aesthetic and neighbourhood identity

Whether the renovation keeps or improves the visual character and the connection residents feel to their living environment.

Benefits:

- Satisfaction and pride
- Pleasant surroundings
- Community care
- Less displacement

Challenges:

- Different tastes and perceived values.



Beyond thermal Comfort

The overall comfort of the living environment, including acoustic comfort, air quality, and how well the space supports everyday use.

Benefits:

- Better air quality
- Quieter indoor environment
- Supports health & well-being

Challenges:

- Harder to measure
- Complex design or construction needed



Flexibility and Usability

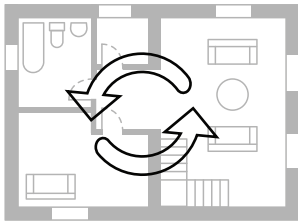
How easily the renovated spaces and systems can adapt to different needs and how simple they are to use in everyday life.

Benefits:

- Multi-use rooms
- Easy-to-use systems
- Better use of often-overlooked shared spaces.

Challenges:

- Higher costs
- Varying preferences



Winter Thermal Comfort

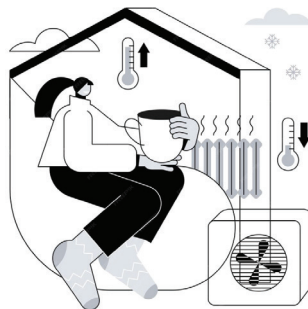
How warm, comfortable, and free of drafts the home stays during cold months.

Benefits:

- Health and well-being
- Less need for extra heating

Challenges:

- Potential disruptive construction
- Different warmth preferences



Summer Thermal Comfort

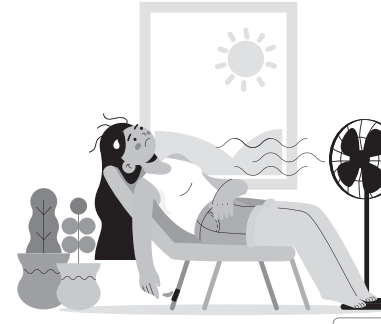
Whether the home protects residents from overheating in summer, especially during heatwaves.

Benefits:

- Health and well-being
- Less need for cooling devices

Challenges:

- May need significant design changes
- Varying cooling preferences



Security

How well the renovation improves the safety and security of the building and its surroundings.

Benefits:

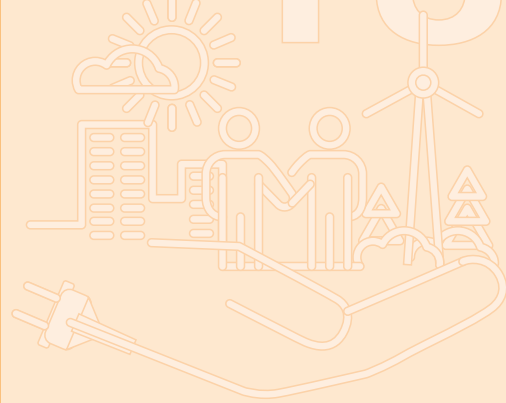
- Reduces risk of break-ins
- Lit, active spaces feel safer

Challenges:

- May require costly upgrades
- Can raise privacy concerns if poorly designed

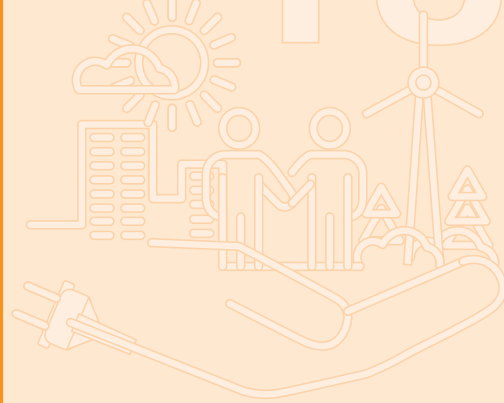


RENOVEREN
MET
JUSTICE



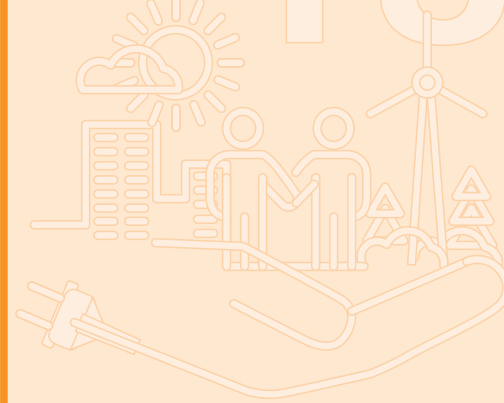
Investment feasibility criteria card

RENOVEREN
MET
JUSTICE



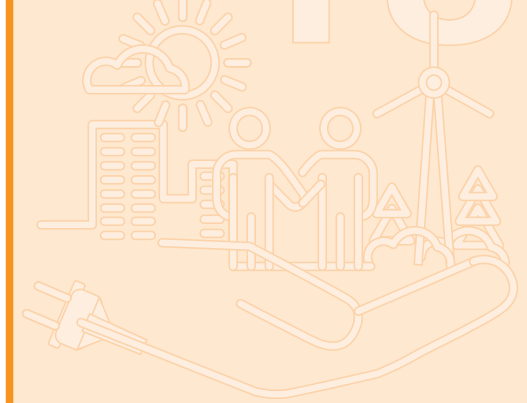
Investment feasibility criteria card

RENOVEREN
MET
JUSTICE



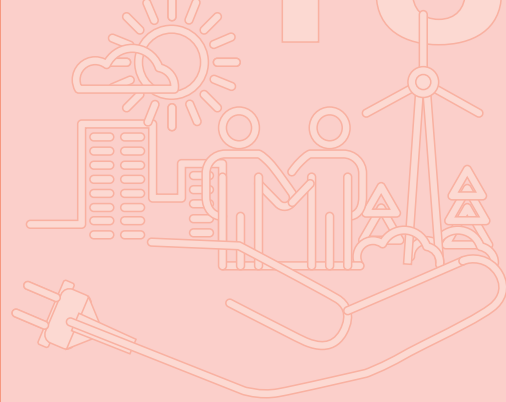
Investment feasibility criteria card

RENOVEREN
MET
JUSTICE



Investment feasibility criteria card

RENOVEREN
MET
JUSTICE



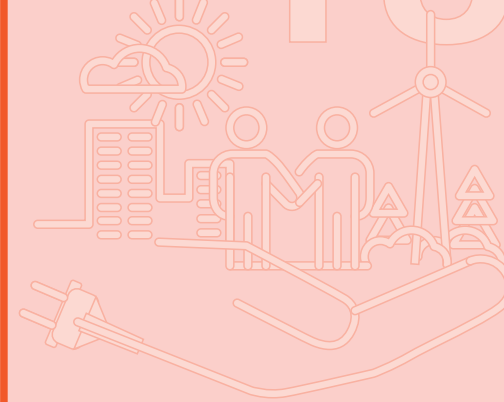
Operational Affordability criteria card

RENOVEREN
MET
JUSTICE



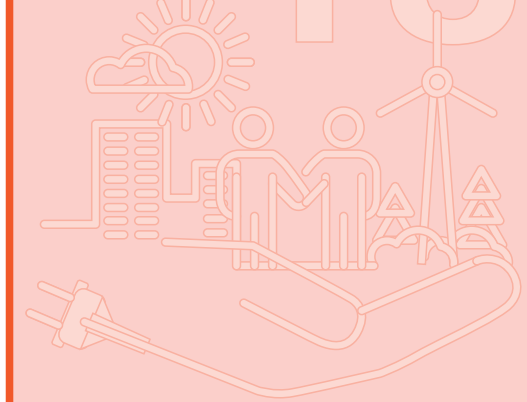
Operational Affordability criteria card

RENOVEREN
MET
JUSTICE



Operational Affordability criteria card

RENOVEREN
MET
JUSTICE



Operational Affordability criteria card

Investment Cost

The amount of money needed upfront to carry out the renovation, including construction, materials, and installation costs.

Benefits:

- Supports realistic planning
- Reduces future repair/energy costs
- Costs may be shared

Challenges:

- Budget constraints
- Short-term cost vs. long-term gain



Total Cost of Ownership

The total cost of living in the home after renovation, including rent, energy bills, and upkeep.

Benefits:

- Avoids hidden future costs
- Supports long-term affordability

Challenges:

- Future savings unclear upfront
- May require higher initial investment



Payback period

The time it takes for the money invested in renovation to be recovered through savings, like lower energy bills or maintenance costs.

Benefits:

- Short payback encourages faster decisions and acceptance

Challenges:

- Ignores non-financial benefits
- Hard to predict due to changing energy use/costs



Expected Energy Savings

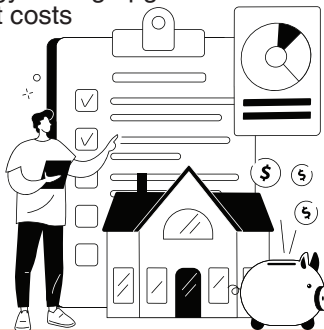
Estimated reduction in energy use and bills after renovation, based on building upgrades

Benefits:

- Lower bills & emissions
- Frees up money for other household needs

Challenges:

- Depends on user behaviour
- Some energy-saving upgrades have high upfront costs



Operational and maintenance costs

Ongoing costs to keep systems working and the home comfortable, safe, and efficient after renovation

Benefits:

- Lower bills & emissions
- Low-maintenance systems reduce stress

Challenges:

- Responsibility unclear (resident vs provider)
- Depends on user behaviour



Expected energy poverty reduction

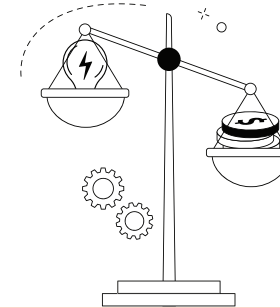
How much the renovation is expected to reduce residents' struggle to afford essential energy needs and efficiency

Benefits:

- Reduces financial stress for heating
- Support vulnerable residents

Challenges:

- Varies by income and habits
- Hard to measure across households



RENOVEREN
MET
JUSTICE



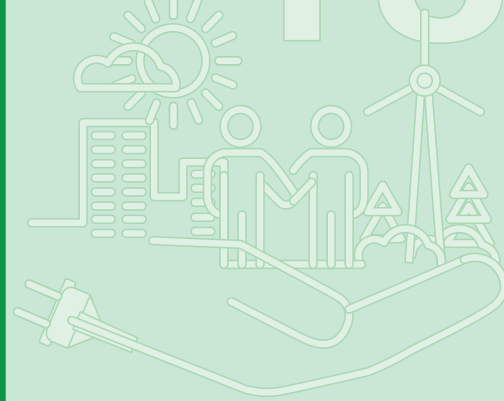
Environmental Sustainability criteria card

RENOVEREN
MET
JUSTICE



Environmental Sustainability criteria card

RENOVEREN
MET
JUSTICE



Environmental Sustainability criteria card

RENOVEREN
MET
JUSTICE



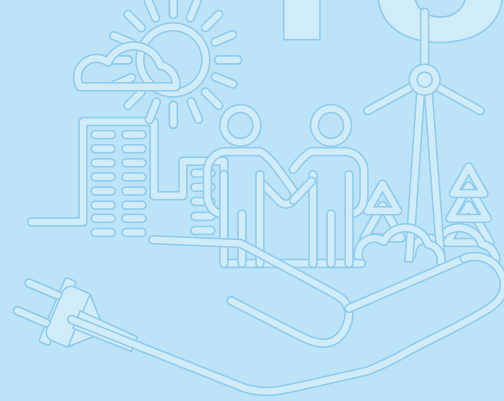
Environmental Sustainability criteria card

RENOVEREN
MET
JUSTICE



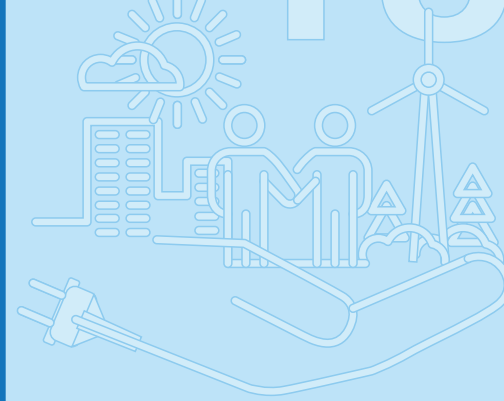
Construction Impact criteria card

RENOVEREN
MET
JUSTICE



Construction Impact criteria card

RENOVEREN
MET
JUSTICE



Construction Impact criteria card

RENOVEREN
MET
JUSTICE



Construction Impact criteria card

Heating demand reduction

How much the renovation helps reduce the need for heating to keep the home warm and comfortable in cold weather.

Benefits:

- Less heating needed
- Improves efficiency & lowers emissions

Challenges:

- Costly or disruptive to install
- May require behaviour change



Cooling demand reduction

How much the renovation helps lower the need for mechanical cooling to keep the home comfortable in hot weather.

Benefits:

- Cuts emissions & energy demand
- Reduces need for AC/fans.
- Lowers overheating health risks

Challenges:

- Higher upfront investment
- Requires effective passive design



Embodied carbon

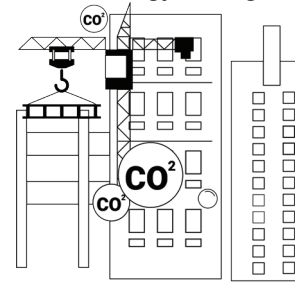
The total amount of carbon emissions released to produce, transport, and install the materials used in a renovation.

Benefits:

- Lower material-related emissions
- Promotes reuse of existing elements

Challenges:

- Low-carbon options may cost more
- Often overlooked vs. energy savings



Share of renewable energy generation

How much of the building's energy comes from renewable sources like solar, wind, or geothermal after renovation.

Benefits:

- Less fossil fuel use & emissions
- Energy independence

Challenges:

- Costly or complex installation
- Needs space & maintenance



Construction Impact

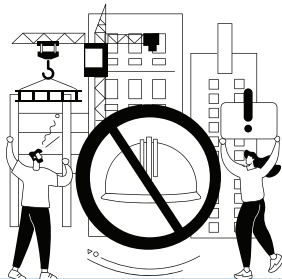
How disruptive the renovation is for residents, including duration, residents relocation, and nuisance like noise or dust.

Benefits:

- Less stress for residents
- Builds trust in the process

Challenges:

- Requires more planning & coordination
- Might limit design/technical options



Prefabrication Index

How much of the renovation work is done off-site (e.g. in a factory), making on-site work quicker, cleaner, and easier.

Benefits:

- Faster, cleaner installation
- Might support circular construction
- Can improve construction quality

Challenges:

- Needs precise planning and measurement

